

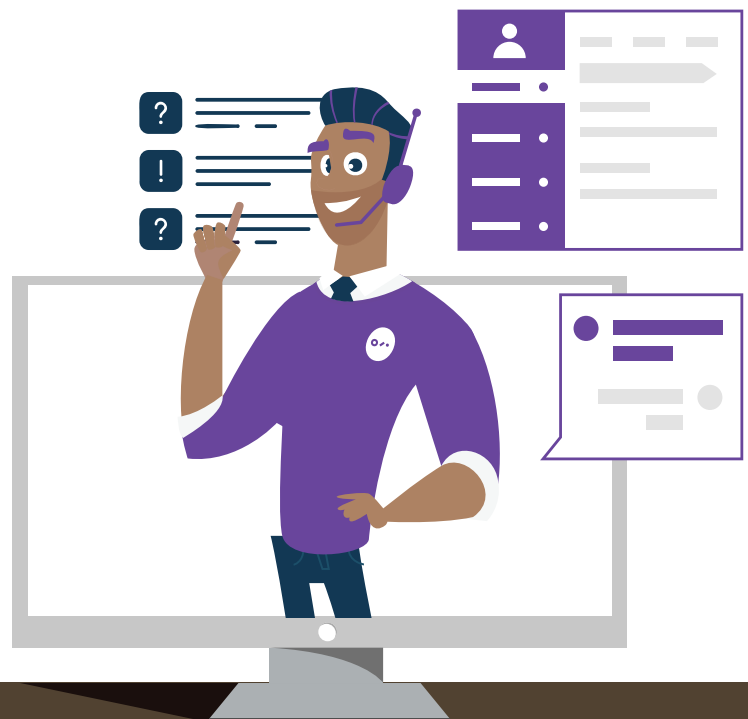


What is a Digital Employee?

A Digital Employee can understand human communication and perform various tasks that are normally carried out by humans. It is an extremely useful AI-powered digital solution that can be used in case management, invoice management, customer service, and other departments of your business.

Digital Employee Benefits

Increasing workload at your front- and back-office can hamper task efficiency, despite your best efforts to streamline it. Our Digital Employee is designed to fast-track all your repetitive business correspondence and help your organization scale up rapidly.



No coding or technical skills required for configuration



Plug & Play, ready-to-go AI solution



Available 24/7 – instantly accessible for your business



Quickly processes large amounts of data in short time



High ROI in few months – up to 90% automation grade

[Get in Touch](#)

Digital Employee Features

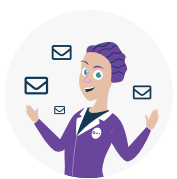
- Understands & interprets unstructured data (free-text) in emails, chats, & documents
- Takes decisions with the help of Rules Engine and facilitates appropriate actions
- Can be customized for specific industries to tackle a variety of work activities
- Can handle a high volume of enquiries and repetitive tasks on a routine basis



An All-rounder AI Solution

Combine various modules such as Chatbot, Emailbot, Documentbot, together with Rules Engine and API/RPA integration to customize your own Digital Employee in the Simplifai Studio. The Studio is our flagship platform designed to provide Intelligent Process Automation for all your business requirements.

Simplifai Digital Employees



Emma

Email
Coordinator



Carl

Customer
Service Agent



Alex

Junior
Accountant



Chris

Claims
Coordinator



Cecilie

Credit
Assistant



Debra

Debt Collection
Assistant

Do you want to know more? Contact Simplifai on hello@simplifai.ai

[Book a Demo](#)

[Get in Touch](#)